

# antibodies

for epigenetics and gene regulation

ACTIVE MOTIF®  
Enabling Epigenetics Research



- DNA Methylation
- Chromatin
- Histones
- Cancer
- Stem Cells
- Transcription Factors

# Highly Characterized Antibodies for Epigenetics and Gene Regulation

At Active Motif, we are committed to providing the highest quality antibodies for studying epigenetics in the context of histone and DNA modifications. Our antibodies are manufactured in-house, and undergo rigorous development and validation procedures to ensure their quality and performance. We are the only company to test our histone modification antibodies for specificity using our ground-breaking MODified™ Histone Peptide Array. Our extensive line ranges from antibodies against histone

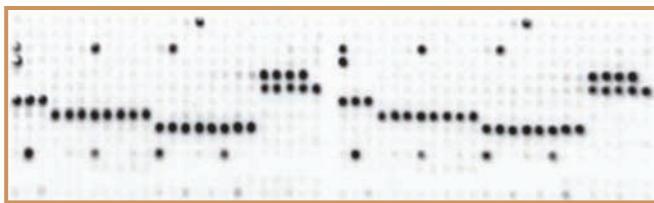
and DNA modifications to transcription factors, chromatin modifiers and stem cell regulators. Our staff scientists validate these antibodies for use in the applications you need them to work in, such as chromatin immunoprecipitation (ChIP), ChIP-Seq, Western blot and immunofluorescence. To make it easier for you to try them, over 80% of our antibodies are available in a **convenient sample size**. For a complete list of antibodies and their validated applications, please visit [www.activemotif.com/abs](http://www.activemotif.com/abs).

## Antibody Development and Validation

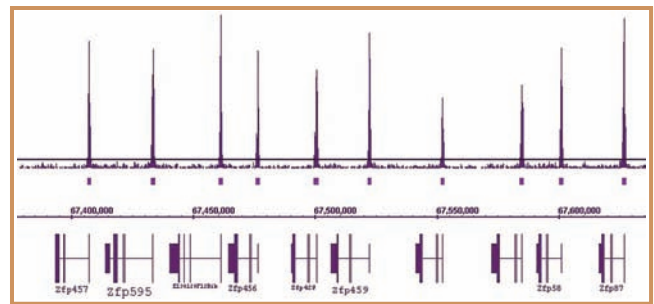
Our antibodies are tested in multiple applications to ensure quality! At Active Motif, antibody development and testing is a very important, tightly controlled and multi-step process. From the design of the immunogen to specificity screening to

technique validation, our years of expertise in antibody development and performance testing ensures that only the highest quality antibodies are offered for use in your research.

Histone Peptide Array



ChIP Sequencing



## Index

APOPTOSIS .....	10
CANCER EPIGENETICS .....	6
CELL CYCLE .....	11
CELL SIGNALING .....	10
CHROMATIN ASSOCIATED .....	4
DNA METHYLATION .....	5
HISTONES .....	3
NUCLEAR RECEPTORS .....	10
POLYCOMB / TRITHORAX .....	8
RNA PROCESSING .....	11
STEM CELLS .....	7
TRANSCRIPTION FACTORS .....	8

## Application Guide

- ChIP** Chromatin IP
- ChIP-Seq** ChIP Sequencing
- DB** Dot Blot
- ELISA** ELISA
- EMSA** Electrophoretic Mobility Shift Assay
- FACS** Flow Cytometry
- ICC** Immunocytochemistry
- IF** Immunofluorescence
- IHC** Immunohistochemistry
- IP** Immunoprecipitation
- MeDIP** Methyl-DNA IP
- WB** Western Blot



Description	Applications	Cat. No.
<b>HISTONES</b>		
H1 pAb	ICC, IF, WB	39707
H1.5S17ph pAb	DB, WB	61107
H2A pAb	WB	39235
H2A, acidic patch pAb	ChIP, WB	39111
H2AK9ac pAb	DB, WB	39109
H2AT120ph pAb	DB, WB	39391
H2AS129ph pAb	DB, WB	39271
macroH2A1 pAb	ICC, IF, WB	39593
macroH2A1.1 pAb	ICC, IF, IHC, WB	39871
macroH2A1.2 mAb	ICC, IF, IHC, WB	61427
macroH2A2 pAb	ICC, IF, IHC, WB	39873
H2Av pAb	ChIP, ChIP-Seq, WB	39715
H2A.X pAb	ICC, IF, WB	39689
H2A.XS139ph pAb	DB, ICC, IF, WB	39117
H2A.Z pAb	ChIP, ChIP-Seq, DB, WB	39113
Htz1 / H2A.Z pAb	ChIP, WB	39647
H2B pAb	ChIP, WB	39237
H2BK5ac pAb	ChIP, ChIP-Seq, DB, WB	39123
H2BK5me1 pAb	DB, WB	61439
H2BK12ac pAb	ChIP, DB, WB	39669
H2BS14ph mAb (Clone MABI 0251)	ICC, IF WB	61011
H2BK15ac pAb	DB, WB	61321
H2BK120ac pAb	ChIP, ChIP-Seq, DB, WB	39119
H2BK120ub1 mAb	ChIP, WB	39623
H3 mAb (Clone MABI 0301)	ChIP, ICC, IF, WB	39763
H3, C-terminal pAb	ChIP, WB	61277
H3.1 / 3.2 mAb	ChIP, ChIP-Seq, ICC, IF, WB	61629
H3ac (pan-acetyl) pAb	ChIP, DB, WB	39139
H3R2me2s (symmetric) pAb	DB, WB	39703
H3T3ph pAb	DB, WB	39153
H3K4ac pAb	ChIP, ChIP-Seq, DB, ICC, IF, WB	39381
H3K4me1 mAb (Clone MABI 0302)	ChIP, ChIP-Seq, DB, WB	39635
H3K4me1 pAb	ChIP, ChIP-Seq, DB, ICC, IF, WB	39297
H3K4me2 mAb (Clone MABI 0303)	ChIP, ChIP-Seq, DB, ICC, IF, WB	39679
H3K4me2 pAb	ChIP, ChIP-Seq, DB, ELISA, IP, WB	39141
H3K4me3 mAb (Clone MABI 0304)	ChIP, ChIP-Seq, ICC, IF, WB	61379
H3K4me3 pAb	ChIP, ChIP-Seq, DB, ICC, IF, WB	39159
H3R8me1 pAb	DB, WB	39673
H3R8me2a (asymmetric) pAb	ChIP, ChIP-Seq, DB, WB	39651
H3K9ac mAb	ChIP, ChIP-Seq, DB, ICC, IF, WB	61251
H3K9ac pAb	ChIP, ChIP-Seq, DB, ICC, IF, WB	39917
H3K9me0 mAb	DB, WB	61399
H3K9me1 mAb (Clone MABI 0306)	ChIP, DB, WB	39681
H3K9me1 pAb	ChIP, ChIP-Seq, DB, WB	39887
H3K9me2 mAb (Clone MABI 0307)	ChIP, DB, FACS, ICC, IF, WB	39683

Description	Applications	Cat. No.
H3K9me2 pAb	ChIP, DB, ICC, IF, WB	39375
H3K9me3 mAb (Clone MABI 0319)	ChIP, DB, ICC, IF, WB	61013
H3K9me3 pAb	ChIP, ChIP-Seq, DB, ELISA, IF, IP, WB	39161
H3K9me2S10ph / H3K27me2S28ph mAb	DB, ICC, IF, WB	61429
H3S10ph mAb (Clone MABI 0312)	DB, ICC, IF, WB	39636
H3S10ph pAb	ChIP, DB, ICC, IF, WB	39253
H3S10phS28ph pAb	ChIP, DB, ICC, IF, WB	39147
H3T11ph pAb	ChIP, ChIP-Seq, DB, WB	39151
H3K14ac pAb	ChIP, ChIP-Seq, DB, WB	39599
H3K14me1 pAb	WB	61509
H3R17me2a (asymmetric) pAb	DB, WB	39709
H3K18ac pAb	ChIP, ChIP-Seq, DB, ICC, IF, WB	39755
H3K18me1 pAb	DB, WB	39667
H3K23ac pAb	ChIP, DB, ICC, IF, WB	39131
H3K23me1 pAb	DB, WB	39387
H3K23me3 pAb	DB, WB	61499
H3K23pr pAb	DB, WB	61397
H3K27ac mAb (Clone MABI 0309)	ChIP, ChIP-Seq, DB, ICC, IF, WB	39685
H3K27ac pAb	ChIP, ChIP-Seq, DB, ICC, IF, IP, WB	39133
H3K27me1 mAb (Clone MABI 0321)	ChIP, ChIP-Seq, DB, ICC, IF, WB	61015
H3K27me2 mAb (Clone MABI 0324)	ChIP, WB	61435
H3K27me2 pAb	ChIP, DB, ICC, IF, WB	39245
H3K27me2me3 mAb	ChIP, ChIP-Seq, WB	39535
H3K27me3 mAb (Clone MABI 0323)	ChIP, DB, ICC, IF, WB	61017
H3K27me3 pAb	ChIP, ChIP-Seq, DB, IF, WB	39155
H3S28ph mAb	ICC, IF	39098
H3.3S31ph pAb	DB, WB	39637
H3K36ac pAb	ChIP, ChIP-Seq, DB, ICC, IF, WB	39379
H3K36me1 pAb	DB, WB	61351
H3K36me2 mAb (Clone MABI 0332)	ChIP, DB, WB	61019
H3K36me2 pAb	ChIP, ChIP-Seq, DB, ICC, IF, WB	39255
H3K36me3 mAb (Clone MABI 0333)	ChIP, ChIP-Seq, DB, WB	61021
H3K36me3 pAb	ChIP, ChIP-Seq, DB, WB	61101
H3T45ph pAb	DB, WB	39737
H3K56ac pAb	ChIP, ChIP-Seq, DB, WB	39281
H3K56me1 pAb	DB, WB	39273
H3K79ac pAb	ChIP, DB, WB	39565
H3K79me1 pAb	ChIP, DB, WB	39145
H3K79me2 pAb	ChIP, ChIP-Seq, DB, WB	39143
H4 mAb (Clone MABI 0400)	ChIP, WB	61521
H4 pAb	ChIP, WB	61299
H4ac (pan-acetyl) pAb	ChIP, ChIP-Seq, DB, ICC, IF, WB	39925
H4R3me2a (asymmetric) pAb	ChIP, DB, WB	39705
H4R3me2s (symmetric) pAb	DB, WB	61187
H4K5ac pAb	ChIP, DB, ICC, IF, WB	39169
H4K8ac pAb	ChIP, ChIP-Seq, DB, WB	61103

The lists above are a small subset of our over 700 antibodies, > 80% of which are available in a **convenient sample size**.

For an up-to-date list of all available antibodies, please visit [www.activemotif.com/abs](http://www.activemotif.com/abs).

Description	Applications	Cat. No.
<b>HISTONES, continued</b>		
H4K12ac pAb	ChIP, ChIP-Seq, DB, ICC, IF, WB	39165
H4K16ac pAb	ChIP, DB, WB	39167
H4H18ph pAb	DB, WB	61411
H4K20me1 mAb	ChIP, ChIP-Seq, ICC, IF, WB	39727
H4K20me2 pAb	ChIP, IF, IP, WB	39173
H4K20me3 mAb	ChIP, DB, WB	39671

Description	Applications	Cat. No.
<b>CHROMATIN ASSOCIATED</b>		
Acf1 pAb	ICC, IF, WB	39721
AIB1 / SRC-3 pAb	ChIP, WB	39797
AIB3 pAb	IHC, WB	39835
ASH2L pAb	ChIP, ChIP-Seq, ICC, IF, IP, WB	39099
ATRX pAb	WB	61049
Atxn7 mAb	ICC, IF, IHC, WB	61347
Atxn7l3 mAb	IP, WB	61339
Aurora B pAb	ICC, IF, WB	39261
BLIMP1 / PRDM1 pAb	WB	61053
BMI-1 mAb	ChIP	39993
Boris / CTCFL pAb	ChIP, ChIP-Seq, WB	39851
BRD3 pAb	ChIP, ChIP-Seq, WB	61489
BRD4 pAb	ChIP, WB	39909
BRD8 / SMAP2 pAb	ChIP, ChIP-Seq, WB	61007
CAF-1 p60 mAb	ICC, IF, IP, WB	39995
CAF-1 p150 mAb	ICC, IF, IP, WB	39997
CARM1 pAb	WB	39251
CBX8 pAb	WB	61237
CHD1 pAb	WB	39729
CHD2 pAb	WB	39363
CHD3 mAb	ICC, IF, IP, WB	61469
CoREST pAb	WB	39955
CTCF pAb	ChIP, ChIP-Seq, ICC, IF, WB	61311
CUL4B pAb	WB	61445
DOTIL pAb	WB	39953
EED mAb	ChIP, ChIP-Seq, IHC	61203
ELP3 pAb	WB	39949
EuHMT1 pAb	WB	39777
EZH2 pAb	ChIP, ChIP-Seq, WB	39901
EZH2 phospho Thr345 pAb	WB	61241
GCN5 pAb	WB	39831
GCN5 mAb	ICC, IF, WB	39975
Hbo1 pAb	WB	39105
HDAC1 mAb	ChIP, ICC, IF, IHC, IP, WB	39531
HDAC1 pAb	ChIP, ChIP-Seq, WB	40967

Description	Applications	Cat. No.
HDAC2 mAb	ICC, IF, WB	39533
HDAC3 pAb	WB	40968
HDAC4 pAb	ChIP, ChIP-Seq, WB	40969
HDAC5 pAb	ChIP, WB	40970
HDAC6 pAb	ChIP, WB	40971
HDAC9 pAb	WB	39793
HDAC11 pAb	WB	39208
HIRA mAb	ICC, IF, IP, WB	39557
Pht1 / Histone H2A.Z pAb	WB	39640
Pht1 / Histone H2A.Zac (pan-acetyl) pAb	DB, WB	39642
HMG-1 pAb	WB	39551
HMG-2 pAb	WB	39029
HMGA1 pAb	ICC, IF, WB	39615
HMGA2 / HMG1-C pAb	WB	61041
HMGNI pAb	WB	39833
Hmgn2 pAb	WB	61353
HPI $\alpha$ mAb	ChIP, ICC, IF	39977
HPI $\beta$ mAb	ICC, IF, IP, WB	39979
HPI $\gamma$ mAb	ICC, IF, WB	39981
HPI $\gamma$ phospho Ser93 pAb	DB, WB	39655
ING1 mAb	ICC, IF, WB	61459
JARID1C / KDM5C pAb	ChIP, WB	39229
Jhd2 pAb	WB	39263
JMJD2A mAb	WB	39815
JMJD2B / KDM4B pAb	ICC, IF, WB	61221
JMJD2D pAb	WB	39247
JMJD2F pAb	WB	39257
JMJD3 / KDM6B mAb	WB	61387
JMJD6 pAb	WB	61493
Kat6a mAb	ChIP, IP	61327
L3MBTL1 pAb	WB	39182
L3MBTL2 pAb	WB	39569
Lamin A, mature mAb	ICC, IF, IP, WB	39961
Lamin A/C mAb	ICC, IF, WB	39287
Lamin A/C R453W mAb	ICC, IF, IP, WB	39959
Lamin B1 pAb	WB	39095
LAP2 alpha mAb	WB	39267
KDM1A pAb	ChIP, WB	61607
MED1 pAb	WB	61065
Menin pAb	ChIP, ChIP-Seq, WB	61005
Mi-2 beta mAb	WB	39695
Mili / PiwiL2 mAb	ICC, IF, IP, WB	61143
MLL / HRX mAb	ChIP, IP, WB	39829
MLL5 / KMT2E pAb	WB	61447
MMSET / WHSC1 mAb	ChIP, ChIP-Seq, ICC, IF, WB	39879
MOF / MYST1 pAb	ICC, IF, WB	61245

The lists above are a small subset of our over 700 antibodies, > 80% of which are available in a **convenient sample size**.

For an up-to-date list of all available antibodies, please visit [www.activemotif.com/abs](http://www.activemotif.com/abs).

Description	Applications	Cat. No.
<b>CHROMATIN ASSOCIATED, continued</b>		
MOZ pAb	WB	39867
MKG15 pAb	WB	39361
MTA2 pAb	WB	39359
Nap1 pAb	IP, WB	39577
Nucleophosmin pAb	WB	39849
O-GlcNAc mAb	IP, WB	61453
OGA/O-GlcNAcase pAb	WB	61425
OGT/O-GlcNAc transferase pAb	ChIP, ChIP-Seq, WB	61355
p300 mAb	ChIP, ChIP-Seq, ICC, IF, IP, WB	61401
PARP-1 N-terminal pAb	ChIP, WB	39559
PARP-1 C-terminal pAb	ChIP, WB	39561
PARP-2 pAb	ChIP, IP, WB	39743
PBRM1 pAb	WB	61381
PCL2 mAb	WB	61153
PELP1 pAb	WB	61263
Phc1 mAb	ICC, IF, IP	39723
Phc2 mAb	ICC, IF, IP	39661
PHF8 pAb	WB	39711
PHF20 pAb	WB	61123
PKM2 pAb	WB	61423
PRMT2 pAb	ICC, IF, WB	61491
PRMT5 pAb	WB	61001
PRMT6 pAb	WB	61003
RAP1 / TERF2IP pAb	WB	61069
RbAp46/48 pAb	ChIP, WB	39198
RBBP5 pAb	ChIP, ChIP-Seq, WB	61405
Ring1B mAb	ChIP, ChIP-Seq, ICC, IF, IP, WB	39663
Rsf1 pAb	WB	39579
SAP30 pAb	ChIP, ChIP-Seq, WB	39731
SATB1 pAb	WB	39839
SETD7 / SET7 pAb	WB	61451
SET8 / PR-SET7 pAb	WB	61009
Sf3b3 mAb	IP, WB	61345
SIN3A pAb	ChIP, WB	39865
SIRT1 mAb	IF, IP, WB	39353
SIRT2 pAb	ICC, IF, WB	61043
SIRT2 phospho Ser331 mAb	WB	61363
SIRT6 pAb	WB	39911
SMARCA2 / BRM mAb	ChIP, ICC, IF, WB	39805
SMARCA4 / BRG1 mAb	ICC, IF, WB	39807
SMARCA1 / HARP mAb	IP, WB	61115
SMARCC1 / BAF155 pAb	ICC, IF, WB	61409
SMC1- $\alpha$ pAb	WB	61067
SMC3 pAb	WB	61131
SMC4 pAb	WB	61129

Description	Applications	Cat. No.
SMRT / NCoR2 mAb	WB	61105
SMRT / NCoR2 pAb	WB	39845
Smyd3 pAb	WB	61407
SNF2h mAb	ChIP, ICC, IF, IP, WB	39543
SNF5 pAb	WB	39775
SUV39H1 mAb	ChIP, IP, WB	39785
SUV39H2 pAb	ChIP, ChIP-Seq, WB	61449
SUV420H1 pAb	WB	61415
Suz12 mAb	ChIP, IHC, IP	39877
Tada2a mAb	IP	61333
TRF2 pAb	IP, WB	39223
TRIM28 mAb	ChIP, ICC, IF, WB	61173
Trrap mAb	ChIP, IP	61335
Ubiquitin mAb	WB	39741
Ubn1 pAb	WB	39869
Uhrf1 mAb	ICC, IF, IHC, IP, WB	61341
WRN mAb	ICC, IF, IHC, WB	61169

Description	Applications	Cat. No.
<b>DNA METHYLATION</b>		
3-Methylcytosine (3-mC) pAb	DB	61111
5-Carboxylcytosine (5-caC) pAb	DB, ICC, IF, IHC	61225
5-Formylcytosine (5-fC) pAb	DB, ICC, IF, IHC	61223
5-Formylcytosine (5-fC) pAb	DB, WB	61227
5-Hydroxymethylcytosine (5-hmC) pAb	DB, FACS, ICC, IF, IHC, MeDIP	39769
5-Methylcytosine (5-mC) mAb	DB, ELISA, FACS, ICC, IF, IHC, MeDIP	39649
CGBP pAb	WB	39203
DNMT1 mAb	ChIP, IHC, IP, WB	39204
DNMT1 monomethyl Lys142 pAb	DB, WB	61497
DNMT2 pAb	WB	39205
DNMT3A mAb	ChIP, WB	39206
DNMT3A dimethyl Lys44 pAb	WB	61323
DNMT3B mAb	ChIP, WB	39207
Kaiso mAb	WB	39365
MBD1 mAb	WB	39215
MBD2 pAb	WB	39547
MBD3 mAb	WB	39216
MBD4 pAb	WB	39217
MeCP2 mAb	ChIP, ICC, IF, IHC, IP, WB	61291
MeCP2 phospho Ser80 pAb	WB	39733
TDG / Thymine-DNA glycosylase pAb	WB	61437
Tet1 pAb	ChIP, ChIP-Seq, WB	61443
Tet2 mAb	IP, WB	61389
Tet3 pAb	WB	61395
Uhrf1 mAb	ICC, IF, IHC, IP, WB	61341

The lists above are a small subset of our over 700 antibodies, > 80% of which are available in a **convenient sample size**.

For an up-to-date list of all available antibodies, please visit [www.activemotif.com/abs](http://www.activemotif.com/abs).

Description	Applications	Cat. No.	Description	Applications	Cat. No.
<b>CANCER EPIGENETICS</b>					
3-Methylcytosine (3-mC) pAb	DB	61111	Histone H3K36me2 pAb	ChIP, ChIP-Seq, DB, ICC, IF, WB	39255
5-Hydroxymethylcytosine (5-hmC) pAb	DB, FACS, IF, IHC, MeDIP	39769	Histone H3K79me2 pAb	ChIP, ChIP-Seq, DB, WB	39143
5-Methylcytosine (5-mC) mAb	DB, ELISA, FACS, ICC, IF, IHC, MeDIP	39649	Histone H4K20me3 mAb	ChIP, DB, WB	39671
Ago1/2/3 mAb	ChIP, ICC, IF, IHC, IP, WB	39937	HMGAI pAb	ICC, IF, WB	39615
AID mAb	WB	39885	HMGNI pAb	WB	39833
AML-1/Runx1 pAb	WB	39000	HOXA9 pAb	WB	39825
AML-2/Runx3 pAb	EMSA	39301	Ikars mAb	WB	39355
AML-3/Runx2 pAb	EMSA	39302	IkB $\alpha$ mAb	WB	40903
Androgen Receptor pAb	ChIP, ChIP-Seq, WB	39781	IkB $\alpha$ . phospho Ser32,36 mAb	WB	40904
ATM phospho Ser1981 mAb	ICC, IF	39529	IKK $\alpha$ mAb	WB	40905
Bcl6 mAb	IHC, WB	61193	IRF-2 pAb	WB	61281
BMI-1 mAb	ChIP	39993	JMJD3 / KDM6B mAb	WB	61387
BMI-1 mAb	ICC, IF, WB	61089	c-Jun pAb	EMSA	39309
Boris / CTCFL pAb	ChIP, ChIP-Seq, WB	39851	Kaiso mAb	WB	39365
BRD4 pAb	ChIP, WB	39909	Ki-67 pAb	WB	39799
BrdU mAb	IHC	61273	KLF4 pAb	WB	39745
CARM1 pAb	WB	39251	LSD1 / KDM1A pAb	ChIP, WB	61607
CHD1 pAb	WB	39729	MeCP2 pAb	WB	39188
CHD2 pAb	WB	39363	MEIS 1/2/3 mAb	ChIP, EMSA, ICC, IF, IHC, WB	39795
CHD3 mAb	ICC, IF, IP, WB	61469	MGMT pAb	WB	39951
DNMT1 mAb	ChIP, IHC, IP, WB	39204	Mi-2 mAb	IP, WB	61463
DNMT1 pAb	WB	39905	MLL / HRX pAb	ChIP, ChIP-Seq, ICC, IF, WB	61295
DNMT3A mAb	ChIP, WB	39206	MMSET / WHSC1 mAb	ChIP, ChIP-Seq, ICC, IF, WB	39879
DNMT3B mAb	ChIP, WB	39207	MOF / MYST1 pAb	ICC, IF, WB	61245
DNMT3L pAb	WB	39907	c-Myc mAb	EMSA, IP, WB	61075
DOTIL pAb	WB	39953	NF $\kappa$ B p50 pAb	WB	39037
EGF Receptor phospho Tyr992 pAb	WB	39094	NF $\kappa$ B p65 pAb	ChIP, WB	39369
Elk-1 pAb	WB	61301	Notch1 mAb	WB	61147
ETO / RUNX1T1 pAb	WB	61109	p53 mAb	IP, WB	39553
Ets-1 pAb	WB	39580	p300 mAb	ChIP, ChIP-Seq, ICC, IF, IP, WB	61401
EZH2 pAb	ChIP, ChIP-Seq, WB	39901	PARP-1 C-terminal pAb	ChIP, WB	39561
c-Fos pAb	WB	61421	PBRM1 pAb	WB	61381
FosB mAb	WB	40960	PBX mAb (long form)	WB	61151
FOXO1/FKHR pAb	WB	39629	PCNA mAb	ICC, IF, IP, WB	61079
GATA-4 pAb	WB	39893	PITX2 pAb	WB	61303
GCN5 mAb	ICC, IF, WB	39975	Progesterone Receptor mAb	ChIP, ICC, IF, IHC, WB	61023
HDAC1 mAb	ChIP, ICC, IF, IHC, IP, WB	39531	RAR- $\alpha$ mAb	EMSA, IHC, WB	39971
HDAC1 pAb	ChIP, ChIP-Seq, WB	40967	RAR- $\beta$ mAb	EMSA, IHC, WB	61027
HDAC3 pAb	ChIP, WB	40968	Ring1B mAb	ChIP, ChIP-Seq, ICC, IF, IP, WB	39663
HDAC3 mAb	IP, WB	39717	SIRT6 pAb	WB	39911
HDAC4 pAb	ChIP, ChIP-Seq, WB	40969	SMAD3 pAb	WB	61249
HDAC5 pAb	ChIP, WB	40970	SMARCA2 / BRM mAb	ChIP, ICC, IF, WB	39805
HDAC6 pAb	ChIP, WB	40971	SMARCA4 / BRG1 mAb	ICC, IF, WB	39807
Histone H3K4me3 pAb	ChIP, ChIP-Seq, DB, ICC, IF, WB	39915	Smyd3 pAb	WB	61407
Histone H3K27me3 mAb (MAB1 0323)	ChIP, DB, ICC, IF, WB	61017	SNF2h mAb	ChIP, ICC, IF, IP, WB	39543
			SNF5 pAb	WB	39775

The lists above are a small subset of our over 700 antibodies, > 80% of which are available in a **convenient sample size**.

For an up-to-date list of all available antibodies, please visit [www.activemotif.com/abs](http://www.activemotif.com/abs).

Description	Applications	Cat. No.
<b>CANCER EPIGENETICS, continued</b>		
STAT1 phospho Ser727 pAb	DB, WB	39633
STAT1 $\alpha$ pAb	WB	39059
STAT2 phospho Tyr689 pAb	DB, WB	39611
STAT3 phospho Tyr705 pAb	DB, WB	39595
STAT3 phospho Ser727 pAb	DB, WB	39613
STAT5A pAb	WB	61133
STAT5A/B phospho Tyr694/Tyr699 pAb	DB, WB	39617
STAT5A/B phospho Ser726/Ser731 pAb	DB, WB	39597
STAT5B pAb	WB	61137
Suz12 mAb	ChIP, IHC, IP	39877
Tet1 pAb	ChIP, ChIP-Seq, WB	61443
TLR2 pAb	WB	40981
TWIST mAb	ICC, IF, IHC, WB	61097
YY1 pAb	ChIP, IP, WB	39071

Description	Applications	Cat. No.
<b>STEM CELLS</b>		
5-Carboxylcytosine (5-caC) pAb	DB, ICC, IF, IHC	61225
5-Formylcytosine (5-fC) pAb	DB, ICC, IF, IHC	61223
5-Hydroxymethylcytosine (5-hmC) pAb	DB, FACS, ICC, IF, IHC, MeDIP	39769
5-Methylcytosine (5-mC) mAb	DB, ELISA, FACS, ICC, IF, IHC, IP, MeDIP	39649
Ago1/2/3 mAb	ChIP, ICC, IF, IHC, IP, WB	39937
ASH2L pAb	ChIP, ChIP-Seq, ICC, IF, IP, WB	39099
BMI-1 mAb	ChIP	39993
BMI-1 mAb	ICC, IF, WB	61089
CBX8 pAb	WB	61237
CHD1 pAb	WB	39729
CHD1 mAb	ICC, IF, WB	39989
CoREST pAb	WB	39955
DAX-1 / NR0B1 mAb	ELISA, ICC, IF, IHC, IP, WB	39983
Dicer mAb	WB	39817
DNMT1 mAb	ChIP, IHC, IP, WB	39204
DNMT3A mAb	ChIP, WB	39206
DNMT3B mAb	ChIP, WB	39207
DNMT3L pAb	WB	39907
Drosha pAb	WB	39783
EED mAb	ChIP, ChIP-Seq, IHC	61203
EZH2 pAb	ChIP, ChIP-Seq, WB	39901
EZH2 phospho Thr345 pAb	WB	61241
FOXO1/FKHR pAb	WB	39629
GATA-1 pAb	ChIP	61535
GATA-4 pAb	WB	39893
GATA-6 pAb	ICC, IF, WB	61063
GCN5 mAb	ICC, IF, WB	39975

Description	Applications	Cat. No.
GLI1 pAb	WB	61215
Goosecoid pAb	WB	61121
HDAC1 mAb	ChIP, ICC, IF, IHC, IP, WB	39531
HDAC2 mAb	ICC, IF, WB	39533
HDAC2 mAb	WB	39883
HDAC3 pAb	WB	40968
HDAC3 mAb	IP, WB	39717
HDAC4 pAb	ChIP, ChIP-Seq, WB	40969
HDAC5 pAb	ChIP, WB	40970
HDAC6 pAb	ChIP, WB	40971
HDAC9 pAb	WB	39793
HDAC11 pAb	WB	39208
Histone H2A.Z pAb	ChIP, ChIP-Seq, DB, WB	39113
Histone H3K4me3 pAb	ChIP, ChIP-Seq, DB, ICC, IF, WB	39159
Histone H3K9ac pAb	ChIP, ChIP-Seq, DB, WB	39137
Histone H3K9me3 pAb	ChIP, ChIP-Seq, DB, ICC, IF, WB	39161
Histone H3K27me3 pAb	ChIP, ChIP-Seq, DB, ICC, IF, WB	39155
Histone H3K36me3 pAb	ChIP, ChIP-Seq, DB, WB	61101
HNF-3 $\beta$ / FOXA2 pAb	IHC, WB	39827
HNF4A pAb	ICC, IF, WB	61189
HOXA9 pAb	WB	39825
JARID1C / KDM5C pAb	ChIP, WB	39229
JMJD2A mAb	WB	39815
KLF4 pAb	WB	39745
KLF5 pAb	ChIP, ChIP-Seq, ICC, IF, WB	61099
LIN28A pAb	ICC, IF, WB	61191
KDM1A pAb	ChIP, WB	61607
MASH1 mAb	IHC, WB	61271
MBD2 pAb	WB	39547
MBD3 mAb	WB	39216
MeCP2 mAb	ChIP, ICC, IF, IHC, IP, WB	61285
MeCP2 mAb	ChIP, ICC, IF, IHC, IP, WB	61291
MeCP2 pAb	WB	39218
MeCP2 pAb	WB	39188
MeCP2 phospho Ser80 pAb	WB	39733
Mili / PiwiL2 mAb	ICC, IF, IP, WB	61143
MLL / HRX mAb	ChIP, IP, WB	39829
c-Myc pAb (65 kDa form)	WB	39012
Myf-5 mAb	ICC, IF, WB	39801
MyoD mAb	ICC, IF, WB	39991
Nanog pAb	ChIP, ChIP-Seq, ICC, IF, WB	61419
NKX2.5 pAb	WB	61267
Notch1 mAb	WB	61147
Notch3 mAb	WB	61149
NR2C2 pAb	WB	61279
Oct-4 pAb	ChIP, ChIP-Seq, ICC, IF, WB	39811

The lists above are a small subset of our over 700 antibodies, > 80% of which are available in a **convenient sample size**.

For an up-to-date list of all available antibodies, please visit [www.activemotif.com/abs](http://www.activemotif.com/abs).

Description	Applications	Cat. No.
<b>STEM CELLS, continued</b>		
PAX7 mAb	ICC, IF, WB	39803
PCL2 mAb	WB	61153
PDX1 pAb	WB	61289
Phc1 mAb	ICC, IF, IP	39723
Phc2 mAb	ICC, IF, IP	39661
PP2A pAb	ChIP, WB	39192
Ring1B mAb	ChIP, ChIP-Seq, ICC, IF, IP, WB	39663
RNA pol II mAb	ChIP, ChIP-Seq, ELISA, ICC, IF, IP, WB	39097
RNA pol II mAb	WB	61081
SALL4 pAb	WB	39957
Sox2 pAb	ICC, IF, IHC, WB	39823
Sox11 pAb	WB	61181
Sp1 pAb	ChIP, IP, WB	39058
Suz12 pAb	ChIP, WB	39357
TAZ / WWTR1 pAb	WB	61265
TCF7L1 / TCF3 pAb	ChIP, ChIP-Seq, WB	61125
Tet1 pAb	ChIP, ChIP-Seq, WB	61443
Tet2 mAb	IP, WB	61389
Tet3 pAb	WB	61395
TRIM28 mAb	ChIP, ICC, IF, WB	61173
UTF1 pAb	WB	61253
YY1 pAb	ChIP, IP, WB	39071

Description	Applications	Cat. No.
<b>POLYCOMB / TRITHORAX</b>		
ASH2L pAb	ChIP, ChIP-Seq, ICC, IF, IP, WB	39099
BMI-1 mAb	ChIP	39993
CBX8 pAb	WB	61237
EED mAb	ChIP, ChIP-Seq, IHC	61203
EZH2 mAb	ChIP	39875
EZH2 phospho Thr345 pAb	WB	61241
GCN5 mAb	ICC, IF, WB	39975
MLL / HRX mAb	ChIP, IP, WB	39829
PCL2 mAb	WB	61153
Phc1 mAb	ICC, IF, IP	39723
Phc2 mAb	ICC, IF, IP	39661
RBBP5 pAb	ChIP, ChIP-Seq, WB	61405
Ring1B mAb	ChIP, ChIP-Seq, ICC, IF, IP, WB	39663
SMARCA1 / SNF2L1 mAb	IHC, WB	61465
SMARCA2 / BRM mAb	ChIP, ICC, IF, WB	39805
SMARCA4 / BRG1 mAb	ICC, IF, WB	39807
SMARCC2 / BAF170 pAb	ICC, IF, WB	61471
Suz12 pAb	ChIP, WB	39357
WDR5 pAb	WB	61485

Description	Applications	Cat. No.
<b>TRANSCRIPTIONAL REGULATION</b>		
6-Methyladenosine (6-meA) pAb	DB	61495
Aiolos mAb	ChIP, WB	39657
AIRE pAb	WB	61139
AML-1/Runx1 pAb	WB	39000
AML-2/Runx3 pAb	EMSA	39301
AML-3/Runx2 pAb	EMSA	39302
AP-2 pAb	WB	39001
ATAD2 pAb	WB	61369
ATF-2 pAb	WB	40977
ATF-2 phospho Thr71 mAb	WB	40975
ATF-6 mAb	FACS, IHC, WB	40962
Bcl3 pAb	WB	39761
Bcl6 mAb	IHC, WB	61193
BCL11A mAb	ICC, IF, IHC, WB	61231
Cas9 mAb	ICC, IF, IP, WB	61577
CGBP pAb	WB	39203
CREB mAb	WB	40961
CTBP pAb	WB	39847
CTBP2 pAb	WB	61261
DPI pAb	WB	61145
EDF1 pAb	WB	61257
EKLF mAb	ChIP, IP, WB	61233
Elk-1 pAb	WB	61301
ELP3 pAb	WB	39949
ETO / RUNX1T1 pAb	WB	61109
Ets-1 pAb	WB	39580
c-Fos pAb	WB	61421
FosB mAb	WB	40960
FOXG1 pAb	ChIP, ChIP-Seq, WB	61211
FOXL2 pAb	WB	61283
FOXO1/FKHR pAb	WB	39629
FOXPI mAb	ChIP, IP, WB	61309
GATA-1 pAb	ChIP	61535
GATA-4 pAb	WB	39893
GATA-6 pAb	ICC, IF, WB	61063
GLI1 pAb	WB	61215
Goosecoid pAb	WB	61121
HIF-1 $\alpha$ pAb	ChIP, ChIP-Seq, WB	39665
HNF-3 $\alpha$ / FOXA1 mAb	IHC, WB	39837
HNF-3 $\beta$ / FOXA2 pAb	IHC, WB	39827
HNF4A pAb	ICC, IF, WB	61189
HOXA9 pAb	WB	39825
HSC70 / HSP7C mAb	ICC, IF, IP, WB	61207
HSP72 mAb	ICC, IF, IP, WB	61209
Ikaros mAb	WB	39355

The lists above are a small subset of our over 700 antibodies, > 80% of which are available in a **convenient sample size**.

For an up-to-date list of all available antibodies, please visit [www.activemotif.com/abs](http://www.activemotif.com/abs).



Description	Applications	Cat. No.	Description	Applications	Cat. No.
<b>TRANSCRIPTIONAL REGULATION, continued</b>					
INHAT-1/TAF-1 $\alpha$ /TAF-1 $\beta$ pAb	WB	39202	p53 pAb	ChIP, EMSA	39334
INHAT-2/pp32 pAb	WB	39213	p63 pAb	ChIP, ICC, IF, WB	39739
IRF-2 pAb	WB	61281	p73 mAb	WB	40972
IRF-3 pAb	ChIP, ICC, IF, WB	39033	p73 $\Delta$ N mAb	WB	40973
IRF-4 pAb	WB	61511	PAX7 mAb	ICC, IF, WB	39803
IRF-5 pAb	ChIP, ChIP-Seq, WB	61269	PAX9 mAb	IHC, WB	61077
JunB pAb	WB	39549	PBRM1 pAb	WB	61381
c-Jun pAb	EMSA	39309	PBX mAb (long form)	WB	61151
JunD pAb	WB	61403	PBX1b mAb	ChIP, IHC, WB	61165
Kaiso mAb	WB	39365	PBX2 mAb	IHC, WB	61155
KLF4 pAb	WB	39745	PDX1 pAb	WB	61289
KLF5 pAb	ChIP, ChIP-Seq, ICC, IF, WB	61099	PGC1- $\beta$ pAb	WB	39859
KLF6 mAb	IHC, WB	61297	PITX2 pAb	WB	61303
TIEG1 / KLF10 pAb	WB	61117	PLZF mAb	ChIP, ICC, IF, WB	39987
LIN28A pAb	ICC, IF, WB	61191	PML mAb	ICC, IF, IP, WB	39773
MASH1 mAb	IHC, WB	61271	PPAR- $\gamma$ mAb	WB	61025
Maz mAb	ChIP, EMSA	39935	PRDM1 / BLIMP1 mAb	IHC, WB	61167
MeCP2 mAb	ChIP, ICC, IF, IHC, IP, WB	61291	Progerin mAb	ICC, IF, WB	39965
MeCP2 phospho Ser80 pAb	WB	39733	Prox1 mAb	ICC, IF, IHC	61093
MED1 pAb	WB	61065	RAP1 / TERF2IP mAb	WB	61235
MEIS 1/2/3 mAb	ChIP, EMSA, ICC, IF, IHC, WB	39795	RBPJ mAb	ChIP, ChIP-Seq, EMSA, ICC, IF, IP	61505
MITF mAb	ChIP, ChIP-Seq, EMSA, ICC, IF, IP, WB	39789	RNA pol II mAb	ChIP, ChIP-Seq, ELISA, ICC, IF, IP, WB	39097
c-Myc mAb	EMSA, IP, WB	61075	RNA pol II mAb	ChIP, IF, IP, WB	61081
c-Myc mAb (61 kDa form)	WB	39502	RNA Pol II CTD phospho Tyr1 mAb	ChIP, IP, WB	61383
c-Myc pAb (65 kDa form)	WB	39012	RNA pol II CTD phospho Ser2 mAb	ChIP, ChIP-Seq, ICC, IF, IP, WB	61083
N-Myc pAb	WB	61185	RNA Pol II CTD phospho Thr4 mAb	ChIP, ICC, IF, WB	61361
Myf-5 mAb	ICC, IF, WB	39801	RNA pol II CTD phospho Ser5 mAb	ChIP, ChIP-Seq, ICC, IF, IP, WB	61085
MyoD mAb	ICC, IF, WB	39991	RNA pol II CTD phospho Ser5 pAb	ChIP, ICC, IF, WB	39233
Nanog pAb	ChIP, ChIP-Seq, ICC, IF, WB	61419	RNA pol II CTD phospho Ser7 mAb	ChIP, ChIP-Seq, ICC, IF, IP, WB	61087
NF-1A pAb	WB	39397	SIPI mAb	ICC, IF, IHC, WB	61095
NF-1B2 pAb	WB	39091	SNAI1 / Snail mAb	IHC, WB	61367
NF $\kappa$ B p50 pAb	WB	39037	Sox2 pAb	ICC, IF, IHC, WB	39823
NF $\kappa$ B p65 pAb	ChIP, WB	39369	Sox11 pAb	WB	61181
NF $\kappa$ B p65 phospho Ser529 pAb	DB, WB	39691	Sp1 pAb	ChIP, IP, WB	39058
NF $\kappa$ B p65 phospho Ser536 pAb	DB, WB	39675	Sp1 non-phospho pAb	WB	39809
NF $\kappa$ B p100 pAb	WB	39687	Sp1 phospho Ser101 pAb	WB	39757
NKX2.5 pAb	WB	61267	SREBP-1 mAb	EMSA, IP, WB	39939
NonO pAb	WB	61247	SREBP-2 mAb	ChIP, WB	39941
Notch1 mAb	WB	61147	SRF mAb	ChIP, ChIP-Seq, IHC, WB	61385
Notch3 mAb	WB	61149	STAT1 phospho Ser727 pAb	DB, WB	39633
NR2C2 pAb	WB	61279	STAT1 $\alpha$ pAb	WB	39059
NR2F2 / COUP2 pAb	ChIP, ChIP-Seq, WB	61213	STAT2 phospho Tyr689 pAb	DB, WB	39611
Nucleolin mAb	ICC, IF, WB	39541	STAT3 phospho Tyr705 pAb	DB, WB	39595
Oct-4 pAb	ChIP, ChIP-Seq, ICC, IF, WB	39811	STAT3 phospho Ser727 pAb	DB, WB	39613
Osteoprotegerin (OPG) mAb	WB	40938	STAT4 pAb	WB	61507
			STAT5A pAb	WB	61133

The lists above are a small subset of our over 700 antibodies, > 80% of which are available in a **convenient sample size**.

For an up-to-date list of all available antibodies, please visit [www.activemotif.com/abs](http://www.activemotif.com/abs).

Description	Applications	Cat. No.
<b>TRANSCRIPTIONAL REGULATION, continued</b>		
STAT5A/B phospho Tyr694/Tyr699 pAb	DB, WB	39617
STAT5A/B phospho Ser726/Ser731 pAb	DB, WB	39597
STAT5B pAb	WB	61137
Supt3h mAb	ChIP, IP, WB	61343
Supt16H / Spt16 pAb	WB	61441
TAL-1 mAb	EMSA, IHC, WB	61259
TAZ / WWTR1 pAb	WB	61265
Tbp mAb	ICC, IF, IHC, IP, WB	61329
Tbpl1 mAb	IHC, WB	61331
TCF7L1 / TCF3 pAb	ChIP, ChIP-Seq, WB	61125
TDG / Thymine-DNA glycosylase pAb	WB	61437
TWIST mAb	ICC, IF, IHC, WB	61097
Ubiquitin mAb	WB	39741
Uhrf1 mAb	ICC, IF, IHC, IP, WB	61341
UTF1 pAb	WB	61253
YAP1 pAb	WB	61293
YY1 pAb	ChIP, IP, WB	39071
ZEB1 pAb	WB	61119

Description	Applications	Cat. No.
<b>APOPTOSIS</b>		
A20 mAb	WB	40901
AIB3 pAb	IHC, WB	39835
AKT1 phospho Ser473 mAb	WB	40902
Bcl10 mAb	WB	39393
Caspase-3 mAb	WB	40924
Caspase-7 mAb	WB	40929
Caspase-8 mAb	WB	40930
Caspase-9 pAb (Pro-form)	WB	40931
Caspase-14 mAb	WB	40932
D4-GDI mAb	WB	40941
DAP-3 mAb	WB	40963
DAP-5 mAb	WB	40964
DcR3 mAb	WB	40933
DR4 mAb	WB	40934
DR6 pAb	WB	40927
DRAK1 pAb	WB	40923
DRAK2 pAb	WB	40926
Histone H2BS14ph mAb (MABI 0251)	ICC, IF, WB	61011
Livin/ML-IAP mAb	WB	40958
MyD88 pAb	WB	40914
PARP-1 N-terminal pAb	ChIP, WB	39559
PARP-1 C-terminal pAb	ChIP, WB	39561
PARP-2 pAb	ChIP, IP, WB	39743

Description	Applications	Cat. No.
Rad21 mAb	ICC, IF, WB	39383
STAT3 phospho Tyr705 pAb	DB, WB	39595
TRAF2 mAb	WB	40919
TRAF5 mAb	WB	40920
TRAIL mAb	WB	40966
Ubiquitin mAb	WB	39741

Description	Applications	Cat. No.
<b>NUCLEAR RECEPTORS</b>		
AIB1 / SRC-3 pAb	ChIP, WB	39797
AIB3 pAb	IHC, WB	39835
Androgen Receptor pAb	ChIP, ChIP-Seq, WB	39781
DAX-1 / NR0B1 mAb	ELISA, ICC, IF, IHC, IP, WB	39983
Estrogen Receptor $\alpha$ mAb	ChIP, IP, WB	61035
Estrogen Receptor $\beta$ mAb	IHC, IP, WB	39767
ERR- $\alpha$ pAb	WB	61047
HNF4A pAb	ICC, IF, WB	61189
LXR- $\alpha$ pAb	ChIP, ChIP-Seq, WB	61175
LXR- $\beta$ pAb	ChIP, ChIP-Seq, WB	61177
NAK1/Nur77 pAb	WB	40982
NCoA4 / ELE1 pAb	WB	39895
PPAR- $\gamma$ mAb	WB	61025
Progesterone Receptor mAb	ChIP, ICC, IF, IHC, WB	61023
PXR pAb	WB	39589
RAR- $\alpha$ mAb	EMSA, IHC, WB	39971
RAR- $\beta$ mAb	EMSA, IHC, WB	61027
RAR- $\gamma$ mAb	EMSA, IHC, WB	39973
RXR- $\alpha$ mAb	EMSA, IP, WB	61029
RXR- $\beta$ mAb	IHC, WB	61031
RXR- $\gamma$ mAb	EMSA, IHC, WB	61033

Description	Applications	Cat. No.
<b>CELL SIGNALING</b>		
A20 mAb	WB	40901
AIB1 / SRC-3 pAb	ChIP, WB	39797
AIB3 pAb	IHC, IP, WB	39835
AKT1 phospho Ser473 mAb	WB	40902
alpha Tubulin mAb	ICC, IF, WB	39527
ATM phospho Ser1981 mAb	ICC, IF	39529
Aurora B pAb	ICC, IF, WB	39261
Copine I pAb	WB	39101
D4-GDI mAb	WB	40941
DAP-3 mAb	WB	40963
DAP-5 mAb	WB	40964

The lists above are a small subset of our over 700 antibodies, > 80% of which are available in a **convenient sample size**.  
For an up-to-date list of all available antibodies, please visit [www.activemotif.com/abs](http://www.activemotif.com/abs).

Description	Applications	Cat. No.
<b>CELL SIGNALING, continued</b>		
DcR3 mAb	WB	40933
DRAK1 pAb	WB	40923
DRAK2 pAb	WB	40926
EGF Receptor phospho Tyr992 pAb	WB	39094
IκBα mAb	WB	40903
IκBα phospho Ser32,36 mAb	WB	40904
IKKα mAb	WB	40905
IKKβ mAb	IP, WB	40907
IKKγ mAb	WB	40908
IKKi/IKKε mAb	WB	40950
IRAK-1 pAb	WB	40910
IRAK-2 pAb	WB	40912
MAD1 mAb	ICC, IF	39659
MAD2L1 mAb	WB	39399
MyD88 pAb	WB	40914
NBS1 pAb	WB	39373
PIM2 mAb	IHC, WB	61159
PMS2 mAb	WB	39221
PP2A pAb	ChIP, WB	39192
Rad17 phospho Ser647 pAb	WB	39222
RANK mAb	WB	40917
TAC1 pAb	WB	40936
TBK1 mAb	WB	40909
TLR2 pAb	WB	40981
TLR3 mAb	WB	40952
TLR6 mAb	WB	40954
TLR8 mAb	WB	40955
TLR9 mAb	WB	40956
TRAF2 mAb	WB	40919
TRAF5 mAb	WB	40920
TRANCE/RANKL mAb	WB	40940
TROY/TAJ pAb	WB	40937
UBE2V2 pAb	WB	39226
Ubiquitin mAb	WB	39741

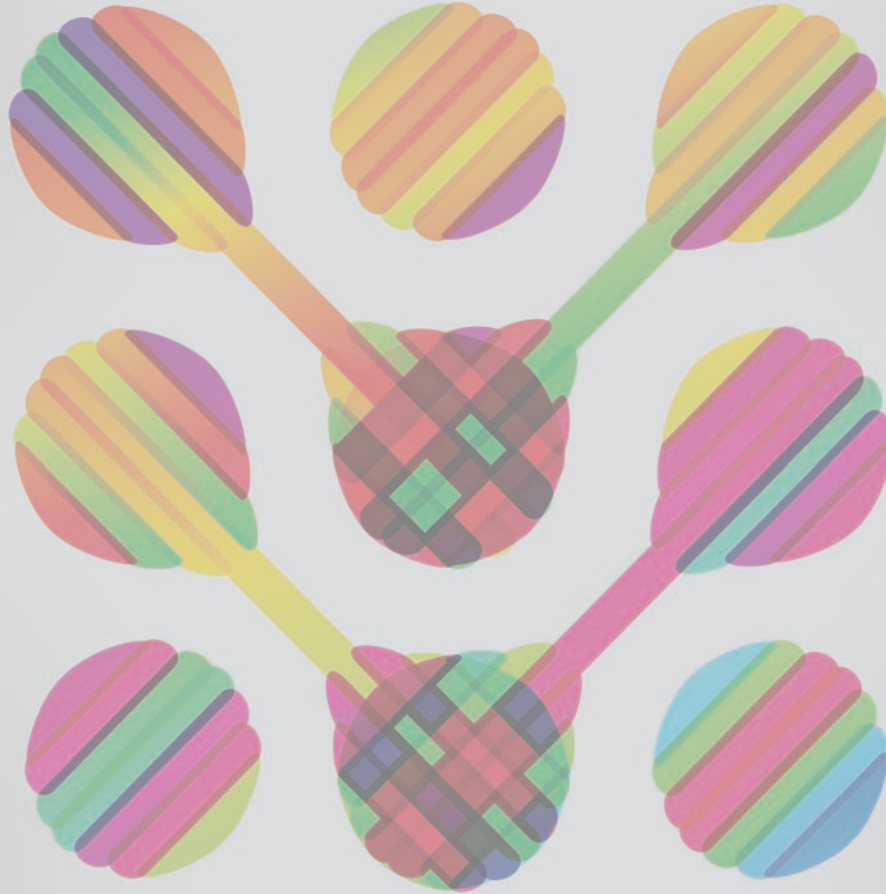
Description	Applications	Cat. No.
<b>CELL CYCLE</b>		
Acf1 pAb	ICC, IF, WB	39721
Ago1 mAb	IP, WB	61071
ASPM / MCPH5 pAb	ICC, IF	61205
ATM phospho Ser1981 mAb	ICC, IF	39529
Aurora B pAb	ICC, IF, WB	39261
BrdU mAb	IHC	61273
Bub1 mAb	ICC, IF	39735

Description	Applications	Cat. No.
BubR1 mAb	ICC, IF	39747
CENP-E mAb	ICC, IF	39619
Cyk-4 phospho Ser170 pAb	DB, ICC, IF, WB	39265
DDB1 pAb	WB	61127
EIA mAb	ICC, IF, IP, WB	39771
FOXO1/FKHR pAb	WB	39629
Geminin pAb	IP, WB	61135
Hbo1 pAb	WB	39105
Hmgn2 pAb	WB	61353
INCENP mAb	ICC, IF	39259
MAD1 mAb	ICC, IF	39659
MAD2L1 mAb	WB	39399
p53 mAb	IP, WB	39553
p63 pAb	ChIP, ICC, IF, WB	39739
p73 mAb	WB	40972
p73ΔN mAb	WB	40973
PCNA mAb	ICC, IF, IP, WB	61079
PHB / Prohibitin pAb	WB	61217
Rad21 mAb	ICC, IF, WB	39383
SMC1 phospho Ser957 pAb	DB, WB	39631
STAT1α pAb	WB	39059
Trrap mAb	ChIP, IP	61335
UBE2N pAb	WB	39224
UBE2V1α pAb	WB	39225
Ubiquitin mAb	WB	39741
Uhrf1 mAb	ICC, IF, IHC, IP, WB	61341

Description	Applications	Cat. No.
<b>RNA PROCESSING</b>		
6-Methyladenosine (6-meA) pAb	DB	61495
Ago1/2/3 mAb	ChIP, ICC, IF, IHC, IP, WB	39937
Ago1 mAb	IP, WB	61071
Ago2 mAb	ICC, IF, IP, WB	39853
Ago3 mAb	ICC, IF, IP	39787
Ago4 mAb	IP, WB	39855
AID mAb	WB	39885
APOBEC2 pAb	WB	39985
Cas9 mAb	ICC, IF, IP, WB	61577
Dicer mAb	WB	39817
FTO pAb	WB	61431
HIRA mAb	ICC, IF, IP, WB	39557
Mili / PiwiL2 mAb	ICC, IF, IP, WB	61143
NonO pAb	WB	61247
RBPJ mAb	ChIP, ChIP-Seq, ICC, IF, EMSA, IP	61505
Sf3b3 mAb	IP, WB	61345

The lists above are a small subset of our over 700 antibodies, > 80% of which are available in a **convenient sample size**.

For an up-to-date list of all available antibodies, please visit [www.activemotif.com/abs](http://www.activemotif.com/abs).



#### UNITED STATES

1914 Palomar Oaks Way, Suite 150  
Carlsbad, CA 92008 USA  
Toll Free: 1 877 222 9543  
Direct: 1 760 431 1263  
Fax: 1 760 431 1351  
sales@activemotif.com



#### EUROPE

Office Park Nysdam  
Avenue Reine Astrid, 92  
B-1310 La Hulpe, Belgium  
Germany Free Phone: 0800/181 99 10  
France Free Phone: 0800/90 99 79  
UK Free Phone: 0800/169 31 47  
Other Countries, Direct: +32 (0)2 653 0001  
Fax: +32 (0)2 653 0050  
eurotech@activemotif.com



#### JAPAN

Azuma Bldg. 7th Floor  
2-21 Ageba-Cho  
Shinjuku-Ku  
Tokyo, 162-0824, Japan  
Direct: +81 (0)3 5225 3638  
Fax: +81 (0)3 5261 8733  
japantech@activemotif.com



#### CHINA

787 Kangqiao Rd.  
Bldg. 10, Suite 202  
Pudong District  
Shanghai, 201315, China  
Hotline: 400 018 8123  
Direct: +86 21 2092 6090  
techchina@activemotif.com



Enabling Epigenetics Research